

Episodes<sup>6</sup>

# ↳ AT THE BIG WAREHOUSE

## NEMESTUDIO

Architecture<sup>12</sup> as<sup>2</sup> Measure<sup>7</sup>  
Ölçü<sup>4</sup> Olarak<sup>6</sup> Mimarlık<sup>8</sup>

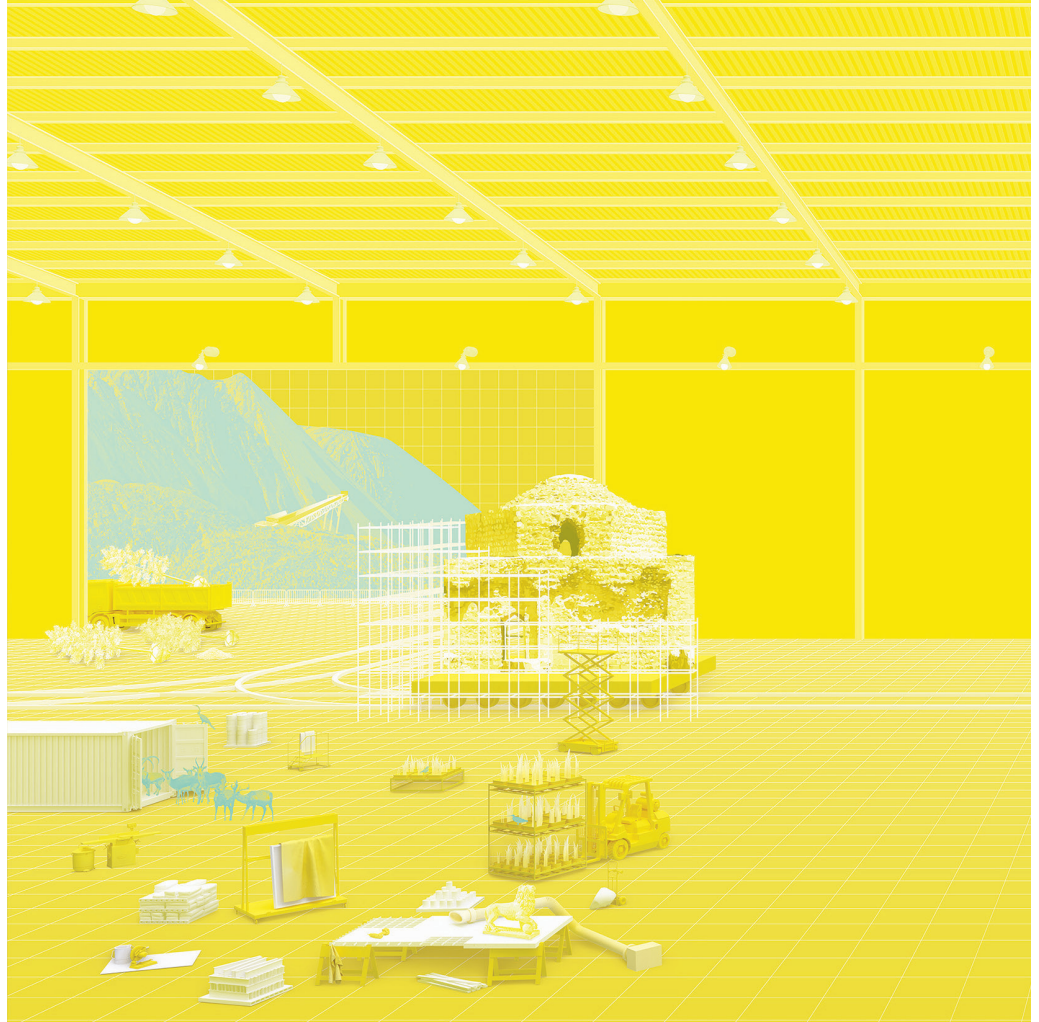


Image: NEMESTUDIO, Four Dioramas, 2021. Diorama of Logistics. Courtesy of NEMESTUDIO.

It was a busy day at the Big Warehouse Logistical Center. Ancient artifacts and numerous more-than-human inhabitants were waiting for their ultimate voyage to the New Land. During the repair and conservation of the Ancient Land, these more-than-human inhabitants, as well as important archeological finds relating to the ancient humans, were being relocated to the New Land. In the Big Warehouse, the Artuklu Hamam, an ancient bathhouse from the 13th century CE—which was moved once from its original location in 2019 to avoid the flooding of the historic town of Hasankeyf due to a dam construction—was now heading once again, this time to a better place. Endangered species of the Ancient Land, the Black-tailed Gazelle, the Wild Goat, the Persian Fallow Deer, and the Uzunyayla Horse, were all getting ready for their voyage. Waiting to be transferred to their new locations, there were many other objects in the Warehouse: ancient construction materials, cast models of rudist fossils from the Ancient Limestone Quarries, endemic plants and trees, various archaeological artifacts depicting human and more-than-human interactions, and numerous examples of paperwork. Some of these mapped the ancient territories of the endangered species, which had lived very close to construction material extraction sites.